

SAP® Business One → Production One APS ADVANCED PLANNING & SCHEDULING

Production One APS takes finite production planning in SAP Business One to a new level. It allows simultaneous scheduling of machines, labor, and tooling. Plus with dynamic inventory allocation and multi-level pegging your schedules will be truly realistic and incredibly easy to manage.

Product Overview

Optimize Usage of Production Resources and Inventory with Advanced Scheduling Rules and Drag-and-Drop Scheduling.

Production One APS is one of the most powerful and easy-to-use Advanced Planning systems available. It quickly produces extremely accurate schedules which take into account machine, labor, tooling, and inventory constraints simultaneously.

Production One APS for SAP Business One incorporates changes which are made to orders, resources, inventory, routings, and bills of material automatically, resulting in schedules that are always up to date.

Planners can perform “what-if” analysis to see the impact of proposed schedule changes to avoid making costly mistakes. Any changes can easily be evaluated with the Impact Monitor and undone when necessary.

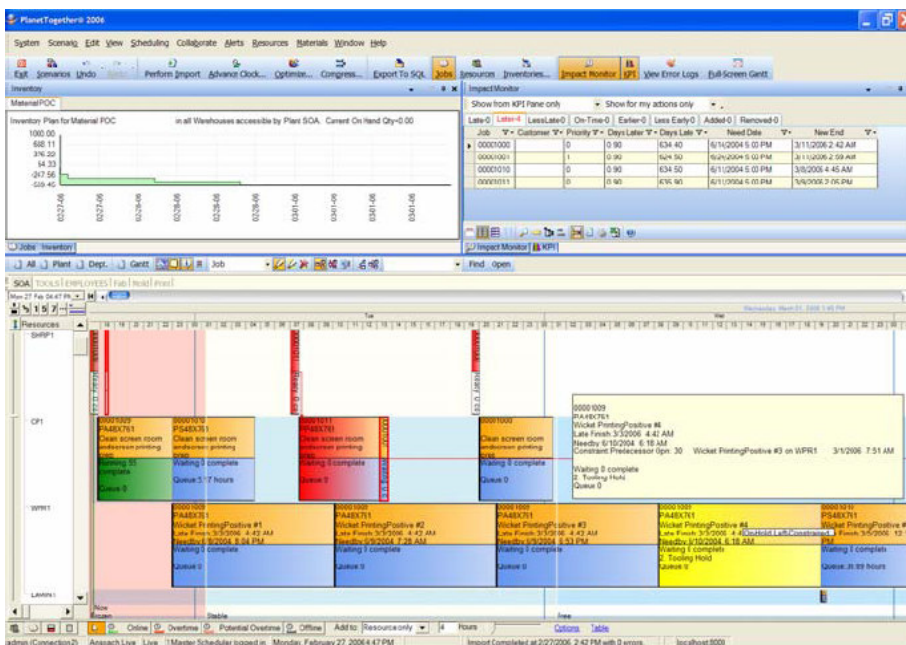
KEY FEATURES

- Dynamic Inventory Constraints
- Machine/Labor/Tooling Constraints
- Automated Optimization
- Collaborative, multi-user planning
- Detailed Impact Analysis
- Drag and Drop rescheduling
- Unlimited Undo/Redo of changes
- Alternate resource assignment
- Lock/Anchor/Expedite/Hold options
- Resource & Job Gantt's
- E-Mail Alerts
- Unlimited What-If Scenarios
- Detailed shift and holiday calendars

REPORTS

- Schedule by Resource
- Schedule by Department
- Impact Analysis
- Key Performance Indicators
- Performance Monitor
- Job Status
- Online Work Dispatch
- Resource utilization
- Projected Inventory Plot & Grid
- Change History

Optional module for Production One for SAP Business One



Production One APS for SAP Business One gives you the visibility and tools you need to stay in control and deliver on time.

Simultaneous Machine, Labor, and Tool Scheduling

- Operations can be scheduled with any number of finitely constrained resources including: machines, labor, tools, etc.
- Labor can be scheduled by scheduling specific Employees or by specifying labor pool assignments to Machines.
- Multiple Employees or a fraction of an Employee's attention can be scheduled for a particular Job step.
- Sub-contract resources can be scheduled as "infinite" resources to incorporate expected lead-times.

Powerful Optimization Engine

- Slider-adjustable, resource-specific Composite Dispatch Rules for balancing between any combination of: due date, priority, revenue, WIP reduction, setup time reduction, work remaining, and many more.
- Theory of Constraints scheduling with Drum-Buffer-Rope logic.
- JIT (Just in Time) scheduling to minimize Work-In-Process inventory.
- Can be run on demand or at timed intervals.

Insightful, Safe "What-If" Impact Analysis

- Detailed listing of all orders affected by any schedule change.
- Key Performance Indicators and graph to track schedule quality
- Undo/Redo of user actions for safe evaluation of alternatives
- Live and multiple What-If Scenarios for clear separation and control of real and experimental schedules

Multi-Planner Collaboration

- Planners simultaneously manage schedules for the operations they know best.
- Have the freedom to schedule the way that fits your business – by work center, by department, by facility, by product line, or by customer.
- Each planner has visibility into all schedules.
- Supports any number of simultaneous Master Scheduler, View-Only, and What-If Users.

Easy-to-use Manual Scheduling Tools

- Drag-and-drop that always respects all constraints and automatically moves other work out of the way.
- Operations can be moved to different times and different (eligible) resources.
- Anchor or Lock Jobs to prevent them from rescheduling to a different time or resource.
- Expedite Jobs as reality dictates.

Adaptive Factory Modeling

- Automatic resource selection by Work Center, Operation type, or specific machine assignment.
- Sequence-dependent setup time calculation
- Overlapping operations can shorten flow times.
- Precise calendars for planning shifts, overtime, maintenance, and holidays
- Finite, Infinite, or Multi-Tasking Resources
- Many-to-many Operation relationships
- Alternate Routings for multiple ways of making the same item.

Efficient, Flexible User Interface

- Powerful Gantt with infinitely customizable activity labels and tooltips.
- Color coding to show timeliness, status, firmness, etc.
- Full screen Gantt mode.
- Monitoring of demand changes and production status changes for informed decision making
- History tracking of all system objects to determine the source and timing of changes
- Capacity Plan graph and grid for visualizing resource utilization and availability Easily find or highlight Work Orders in the Gantt.

Navigator
Business One Solutions

